



Surrey Heath Borough Council
Surrey Heath House
Knoll Road
Camberley
Surrey GU15 3HD
Telephone: (01276) 707100
Facsimile: (01276) 707177
DX: 32722 Camberley
Web Site: www.surreyheath.gov.uk

Division: Legal & Democratic Services
Please ask for: Eddie Scott
Direct Tel: 01276 707160
E-Mail: democratic.services@surreyheath.gov.uk

To: All Members of the **EXTERNAL PARTNERSHIPS SELECT COMMITTEE**

The following papers have been added to the agenda for the above meeting.

They were not available for publication with the rest of the agenda.

Yours sincerely

Damian Roberts

Chief Executive

SUPPLEMENTARY PAPERS

		Pages
9	NHS Frimley and Surrey Heath Police Presenters' Presentations	3 - 22

This page is intentionally left blank



The health and care system for Surrey Heath and partnership working

External Partnerships Select Committee Meeting
6th June 2023

Tom Lawlor

Director of Operations, Surrey Heath place

Tom.lawlor@nhs.net

The Local Structure of Health and Care



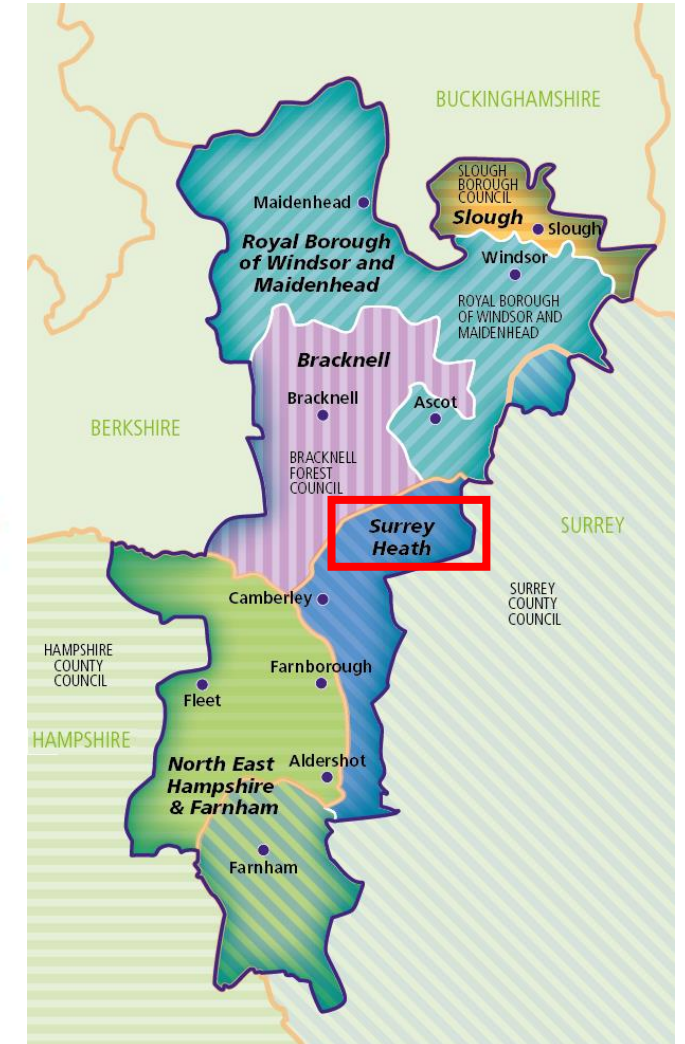
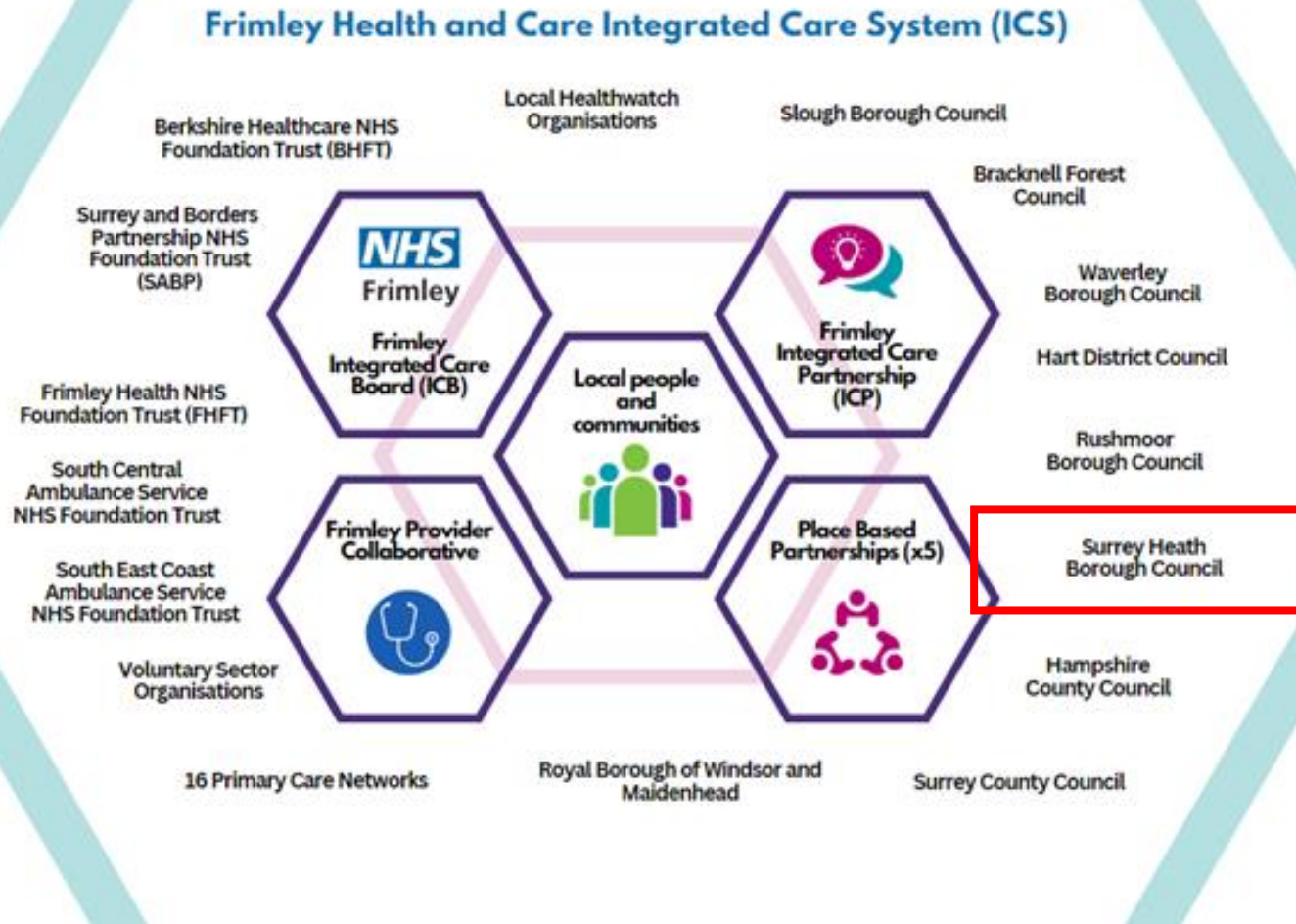
The Health and Care Act in April 2022 reformed organisation and delivery of health and care services in England.

- **Formalisation of integrated care systems (ICS) - Supports collaboration and partnership-working to integrate services for patients improve population health**
- Brings together the NHS and local authorities as equal partners to focus more widely on health, public health and social care
- **Improvements driven by organisations collaborating over smaller geographies 'places', and 'neighbourhoods'.**
- Not one-size-fits-all - gives local leaders flexibility in how they setup local arrangements
- **Integrated Care Boards** created – hold the statutory NHS commissioning responsibilities



The Frimley Integrated Care System

Page 5



The Frimley Health and Care Integrated Care Partnership (ICP)

- A statutory joint committee between the Local Authorities and the Frimley Integrated Care Board (ICB)
- Sets the strategic intent of the partnership and acts as final approver of the ICS Strategy, including the proposed programmes of work, outcomes and intended benefits
- Forum to consider and influence the wider determinants of health, creating healthier environments and inclusive and sustainable economies – shaped by the views and perspectives of the broadest range of local stakeholders and democratic representatives.

Page 6



Partnership working in Surrey Heath



Whole system approach to obesity and healthy weight – led by the borough

<https://www.healthysurrey.org.uk/nutrition-and-physical-activity/professionals>



Anchor institutions – pilot in Old Dean



Social prescribing

<https://www.surreyheath.gov.uk/residents/communities-wellbeing/community-services/surrey-heath-social-prescribing-service>



COVID vaccination and health checks

<https://www.facebook.com/SurreyHeathPCNPrimaryCareNetwork>

What next and our focus for 2023-24



- Access to services and changes to how they are delivered
- Effective use of our resources
- Community engagement – relationships at neighbourhood and place level
- Build on our existing partnerships to maximise impact of our initiatives



Surrey Heath

Inspector 4682 Sam Turner

Police and Crime Plan 2021-2025

- Preventing violence against women and girls in Surrey
- Protecting people from harm in Surrey
- Working with Surrey communities so that they feel safe
- Strengthen relationships between Surrey Police and Surrey residents
- Ensuring safer Surrey roads



Surrey Heath

Surrey Heath Borough Policing Teams

Specialist Neighbourhood Team (SNT) - 2 SGTS, 6 POLICE CONSTABLES, 2 YOUTH ENGAGEMENT POLICE CONSTABLES, 6 PCSO's.

Neighbourhood Policing Teams (NPT) – 05 Rotas of Officers providing a 24/7 emergency response

Domestic Abuse Team (DAT) – runs centrally on the division and this specialist department deals with all intimate domestic abuse crime.

Child exploitation and Missing Unit (CEMU) – runs centrally on the division but provides specialist support

CID – runs centrally on the division and provides specialist investigative capacity for appropriate crimes

Child Abuse Team (CAT) – run centrally on the division and provides specialist investigative support and is part of strategy discussions with child services.

Surrey Heath Crime Statistics

Categories	Recorded current	Recorded previous	Change	%age change	Solved current	Solved previous	Change
TMO	4,963	4,951	12	↑ 0.2%	555	609	-54
Domestic abuse	695	736	-41	↓ -5.6%	87	106	-19
High harm	893	959	-66	↓ -6.9%	105	120	-15
Violent DA	569	615	-46	↓ -7.5%	68	86	-18
Violence with injury DA	142	174	-32	↓ -18.4%	19	29	-10
Violence without injury DA	427	441	-14	↓ -3.2%	49	57	-8
Hate crime	117	147	-30	↓ -20.4%	18	22	-4
Serious sexual	134	143	-9	↓ -6.3%	7	7	0
Rape	58	59	-1	↓ -1.7%	1	2	-1
Child abuse	117	106	11	↑ 10.4%	15	11	4
Robbery	26	14	12	↑ 85.7%	3	4	-1
Adult abuse	23	17	6	↑ 35.3%	2		2
Burglary - residential	123	164	-41	↓ -25.0%	14	10	4
Burglary - business and community	82	70	12	↑ 17.1%	2	1	1
Violent Non-DA	1,816	1,885	-69	↓ -3.7%	186	203	-17

Comparative TNO data

- Guildford – 09,906
- Woking – 06,383
- Waverley – 05,724

The team have also been successful in applying for, and executing, several property warrants. In total, 1 modern slavery and 6 drug related warrants have been granted by local magistrates to great effect in recent months. Several arrests have been made and controlled substances seized in a robust response to the ongoing issue of drug supply in the community.

Page 13



Surrey Heath Beat (Surrey Police)

To read the full press release, visit our website:

<https://www.surrey.police.uk/.../20-years-behind-bars.../>



SURREY.POLICE.UK

20 years behind bars for man who murdered teenager in Camberley

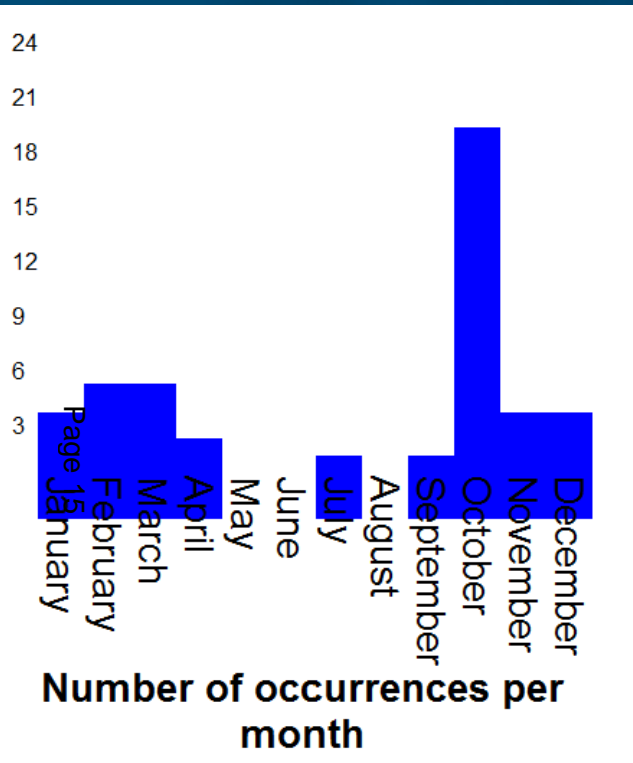
Rolling Year to date – Surrey Heath Vehicle Crime Statistics

Page 12

Categories	Recorded current	Recorded previous	Change	%age change	Solved current	Solved previous	Change	Solved %age change	Rate current	Rate previous	Rate change
+ Vehicle crime	430	359	71	↑ 19.8%	25	7	18	↑ 257.1%	5.8%	1.9%	↑ 3.9%
+ Vehicle crime - catalytic converter	42	49	-7	↓ -14.3%		2	-2	↓ -100.0%		4.1%	↓ -4.1%
+ Vehicle crime (exc. interference)	335	316	19	↑ 6.0%	9	7	2	↑ 28.6%	2.7%	2.2%	↑ 0.5%
+ Vehicle crime (exc. interference) - C...	42	47	-5	↓ -10.6%		2	-2	↓ -100.0%		4.3%	↓ -4.3%
+ Theft from a vehicle	212	208	4	↑ 1.9%	4	3	1	↑ 33.3%	1.9%	1.4%	↑ 0.4%
+ Theft from a vehicle - Cat Con	42	47	-5	↓ -10.6%		2	-2	↓ -100.0%		4.3%	↓ -4.3%
+ Theft of a vehicle	123	108	15	↑ 13.9%	5	4	1	↑ 25.0%	4.1%	3.7%	↑ 0.4%
+ Vehicle interference and tampering	95	43	52	↑ 120.9%	16		16		16.8%		↑ 16.8%
+ All crime - catalytic converter	43	49	-6	↓ -12.2%		2	-2	↓ -100.0%		4.1%	↓ -4.1%

Current period: 01-May-22 to 30-Apr-23 compared to previous period: 01-May-21 to 30-Apr-22

Surrey Heath Catcon crime statistics



Daily and hourly occurrences

	SUNDAY	MONDAY	TUESDAY	WEDNESDAY	THURSDAY	FRIDAY	SATURDAY	UNKNOWN	TOTAL
NUMBER OF EVENTS ->	0	2	7	4	11	7	11	0	42
0:00 TO 3:59			1			1			2
4:00 TO 7:59				1		2	2		5
8:00 TO 11:59		1	1	1	8		1		12
12:00 TO 15:59			2	1	2		2		7
16:00 TO 19:59		1	1	1	1		1		5
20:00 TO 23:59			2			4	5		11
UNKNOWN HOUR									0

Rolling 12 month Total

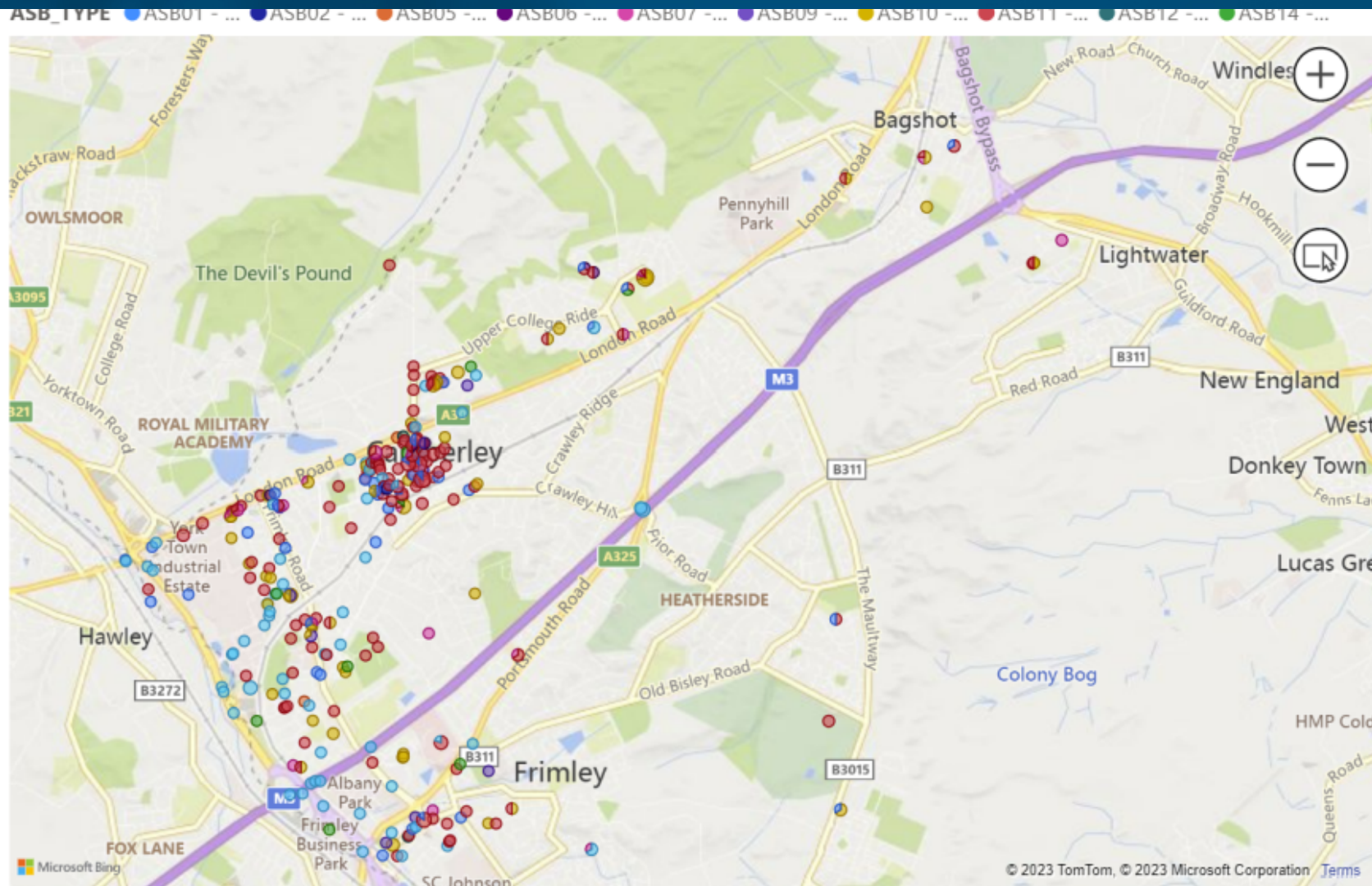
*We continue to work with our communities to tackle vehicle crime, a priority offender has been brought to justice relating to theft from vehicles committed across several different areas within the borough. Officers' ability to recognise crime trends has brought **21 charges** against the Offender who currently awaits sentencing. There has been a noteworthy impact to the crime data in the areas affected by this prolific offender.*

Page 16

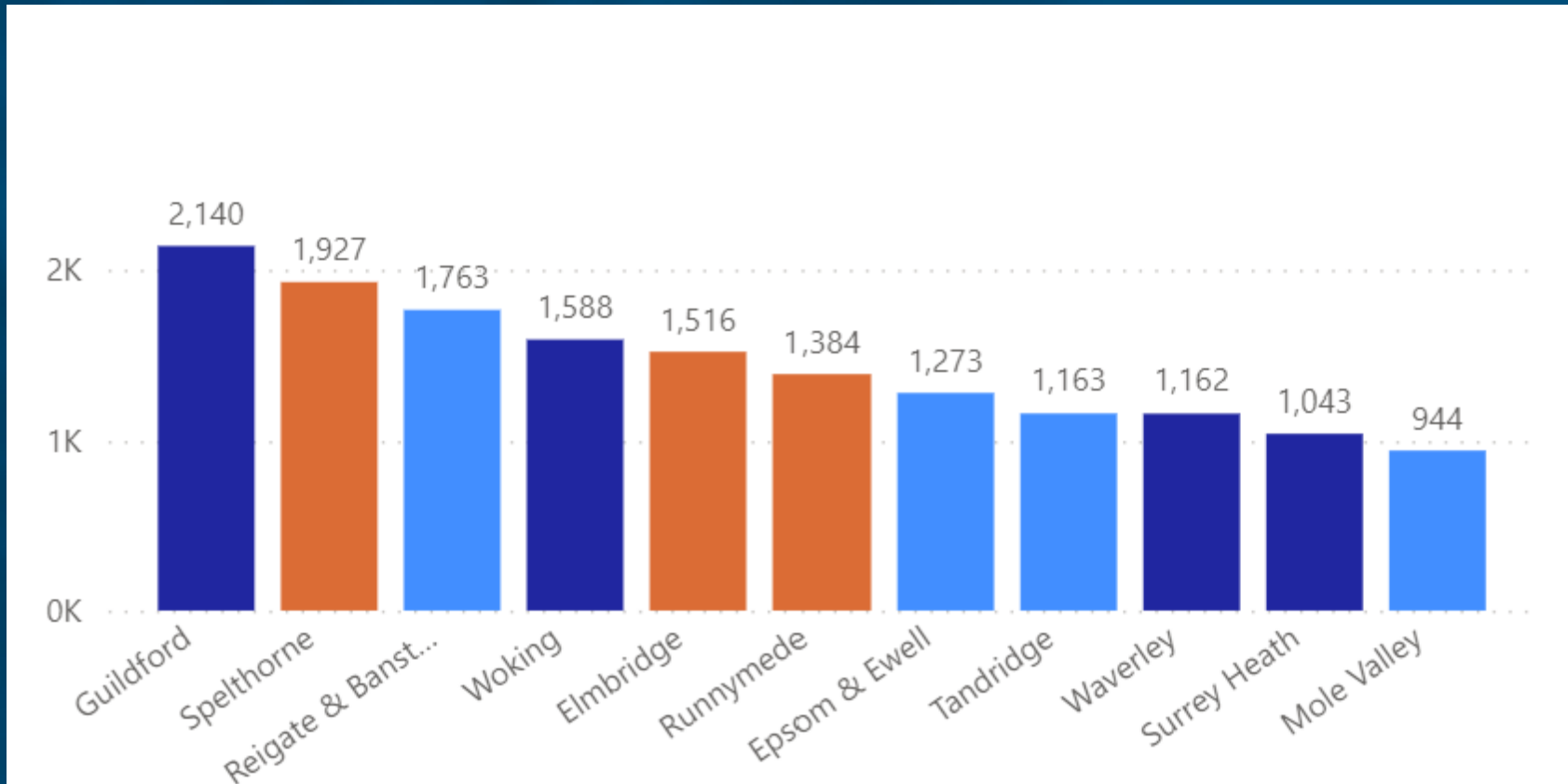


ASB incidents – Past Year

ASB_TYPE	Incidents
ASB11 - ROWDY & INCONSIDERATE BEHAVIOUR/NUISANCE	181
ASB10 - NUISANCE NEIGHBOURS	83
ASB15 - VEHICLE NUISANCE / INAPPROPRIATE USE	73
ASB16 - ROWDY & INCONSIDERATE BEHAVIOUR/PERSONAL	30
ASB07 - NOISE	20
ASB01 - ABND VEH NOT STOLEN OR CAUSING OBSTRUCTN	10
ASB09 - LITTERING/DRUGS PARAPHERNALIA	10
ASB14 - TRESPASS	9
ASB05 - FIREWORKS - INAPP SALE /USE /POSSESSION	5
ASB06 - MALICIOUS / NUISANCE COMMUNICATIONS	5
ASB12 - STREET DRINKING	2
ASB02 - ANIMAL PROBLEMS	1
Total	429



ASB incidents – Borough Comparison data



Section 34 Dispersal Orders will be considered and have been implemented to tackle ASB.



In recent months, the Surrey Heath Safer Neighbourhood Team have been successful in enforcing closure orders on 4 separate properties, the most of any team on the western division. Our familiarity with specialist legislation, and a close working relationship with local housing agencies, has allowed us to implement prompt and effective solutions to anti-social behaviour. We encourage residents to continue to engage with their local officers to escalate matters relating to ASB at every opportunity.



Surrey Heath Beat (Surrey Police) | Camberley | Facebook

@SurreyHeathBeat

Page 21



PC Paul Finnegan

-MEET THE BEAT-

Saturday 27th May 2023
2:30pm-3:30pm
@ Chobham Parish Pavilion,
Station Road,
Chobham
(Opposite Tesco)

PCSO John Adams



Thank you for your attention...



Any questions?